

# SANTANA 27 FEVER



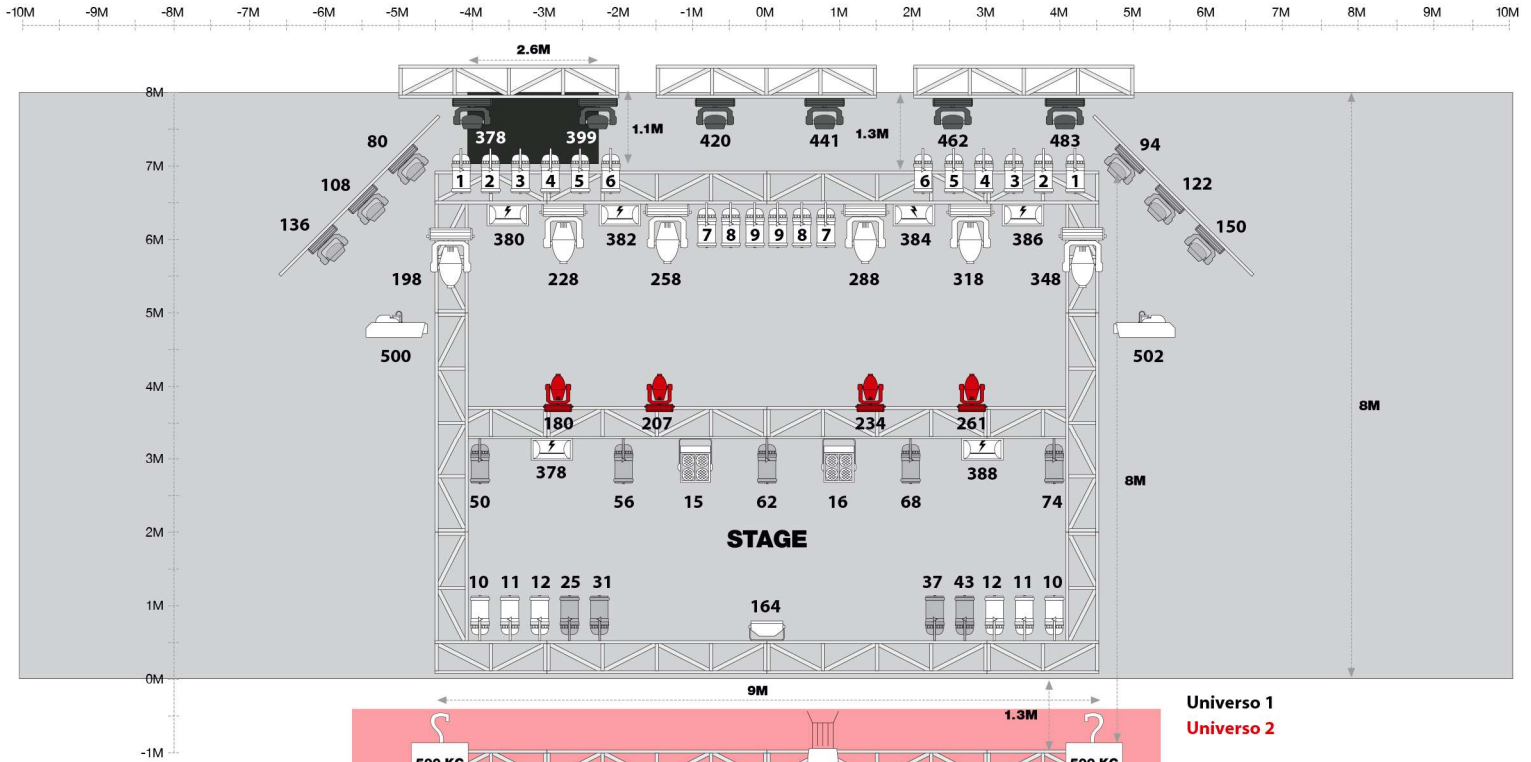
SALA GOLD  
RIDER TECNICO

santana27

fever

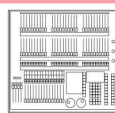
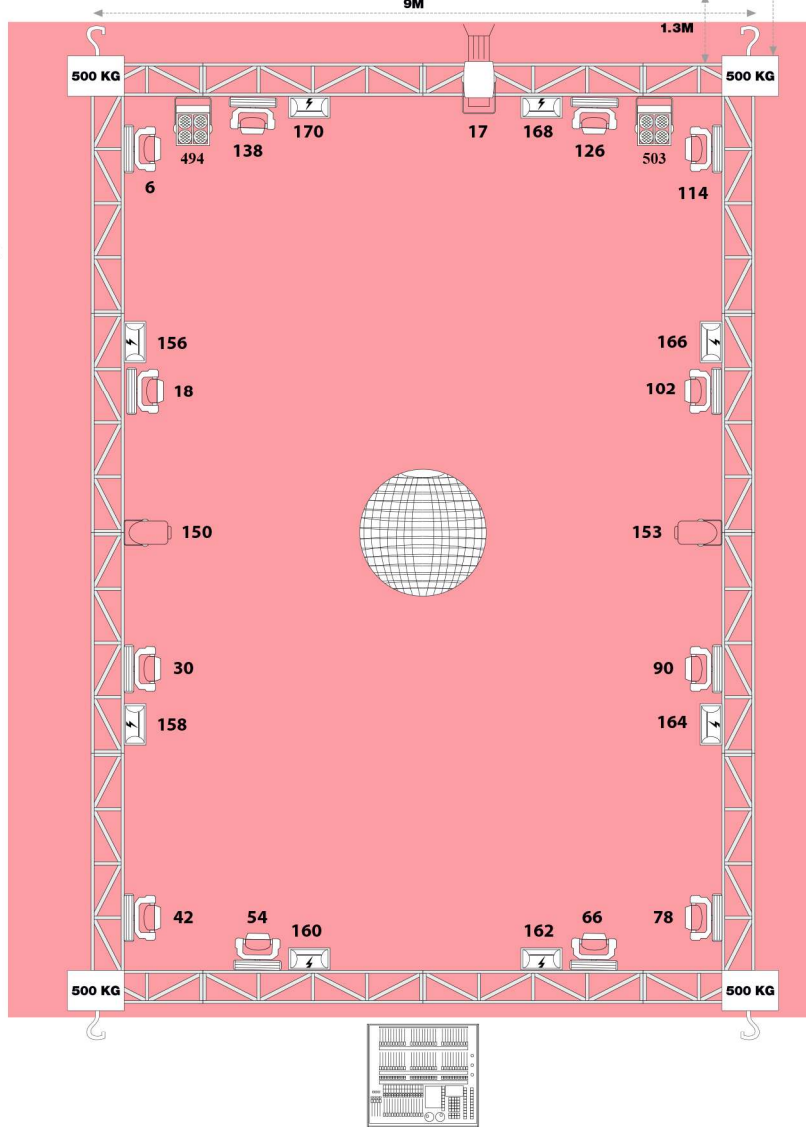


# SALA GOLD / PLANO DE ILUMINACION



Universo 1  
Universo 2

ALTURA:  
Escenario a techo: 5 m  
Escenario truss: 4m



## SALA GOLD / ILUMINACION



Road Hog 4 High End System



Par 64 (Conventional)



Pro lights (Mode 6ch)



Strobe 1500



Recorte 750 25°/50°



Color Change Triton Blue MF3



Proyector Led RGB Triton Blue



Par Led 136 Triton Blue (Wally)



Móvil Robe Pointe



Cabeza Móvil Mac 101 RGB



Robe Robin 100 Led Beam



Robe Robin 300 Led Beam



Móvil Robe Mini Pointe



JEM Compant HazerPro-Martin

**P.A.**

Line Array Adamson: 12 x Spektrix, 4 x Spektrix W 15°, 4 x Spektrix Sub (2 x 18"), 4 x T21 Sub (2 x 21")  
Amps: 4 x Powersoft K6, 6 x Powersoft K3, 2 x Powersoft K2  
Control: 2 x XTA Electronics DC1048

**F.O.H.**

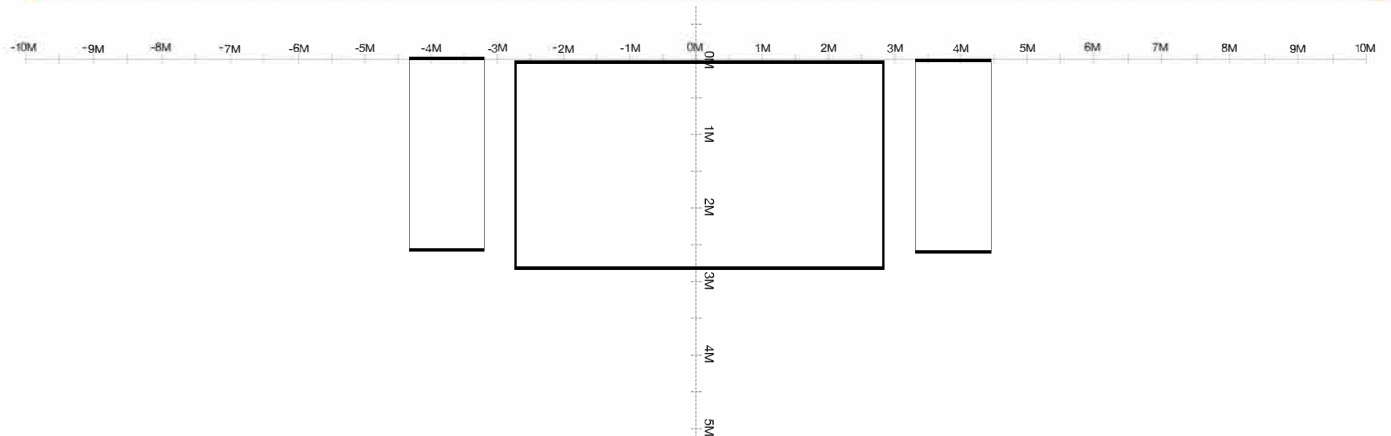
Digidesign Profile  
Intercom

**MONITORES**

Digidesign Venue SC-48  
10 x Adamson Monitor (6 x M12 + 4x M15)\*  
Amp. 5 x Powersoft K2  
Sidefill 1 x Master Audio MAW218D + 2 x Master Audio MA210D (per side)  
Drumfill Master Audio MAW218D + 1 x Adamson M15 \*(1 of the 4x M15)

**MICROFONIA**

Shure: SM58, SM57, Beta 58, Beta 57, Beta 52, Beta 91, Beta 98Ds, Beta 98HC  
Akg: C451, D112  
Senheiser: MD 421, 606  
BSS DI  
Cableado (Van Damme Neutrik) y pies de micro Beyer Dinamic



**PANTALLA CENTRAL.**

Modelo: Pixel P4.0 SMD  
Tamaño en cm: 520cm x 272cm  
Píxeles: 1280 x 680 (Ancho x alto)  
Proporcion 16/9  
Software: NovaStar

**PANTALLAS LATERALES.**

Modelo: Pixel P4.0 SMD  
Tamaño en cm: 128cm x 256cm  
Píxeles: 320 x 640 (Ancho x alto)  
Software: NovaStar